



FORCDYNO

Committed to High Quality Service



deals in
pumps and
Systems



+91-955 540 1089



manohar@forcdyno.com

ABOUT US

Committed to High Quality Service

We are committed to providing high-end industrial solutions that meet all your requirements. We also pride ourselves on delivering exceptional customer support.

What sets FORCDYNO apart from the other players, in the market, is its urge for growth through delivery of excellent products and service to all its customers within quick time.

Thorough research & development, stringent quality control & sophisticated testing procedures & facility is the back-bone of our organization.





FORCDYNO

- 01. Xylem water Pumps**
- 02. SPX Johnson Pumps**
- 03. Bran Luebbe Pumps**
- 04. SR Metering Pumps**
- 05. Moniba Pumps**
- 06. G M Engineering Valves**
- 07. WILFLEY Pumps
(Legacy, Slurry & Chemical Pumps)**





FORCDYNO

Xylem Pumps



FORCDYNO

XYLEM WATER PUMPS

End Suction Single stage centrifugal Pumps

P-PSA-PK SERIES
peripheral pumps

Capacities up to
Head up to
Powers up to

50 Hz	60 Hz
3.72 m ³ /h	3.9 m ³ /h
82 m	83 m
1,1 kW	1,1 kW



SP SERIES
self priming pumps

Capacities up to
Head up to
Powers up to
Suction head to

50 Hz	60 Hz
2.75 m ³ /h	2.7 m ³ /h
49 m	46 m
0.75 kW	0.75 kW
7 m	7 m



CEA-CEAN SERIES
CA-CAN SERIES
closed impeller
pumps (AISI 316)

Capacity up to
Head up to
Power up to

50 Hz	60 Hz
31 m ³ /h	32 m ³ /h
62 m	46 m
3 kW	3 kW



Various seals options available

BG SERIES
self priming pumps

Capacity up to
Head up to
Suction head to
Power up to

50 Hz
4.2 m ³ /h
53 m
8 m
1,1 kW



The centrifugal range is the largest available within the Lowara portfolio and covers a multitude of applications. The Lowara single-stage end-suction products range has a large hydraulic coverage; supported by diverse seal arrangements and material options to satisfy pumping needs from potable water to water with aggressive chemicals.

As mandated by the European Union, the applicable series are compliant with the ErP Eco-design directives.

Variable speed pumping is available with the addition of the Hydrovar

CO SERIES
open impeller
stainless steel
pumps (AISI 316)

Capacity up to
Head up to
Power up to

50 Hz	60 Hz
54 m ³ /h	54 m ³ /h
24 m	24 m
3 kW	3 kW



SHO SERIES
open impeller
pumps (AISI 316)

Capacity up to
Head up to
Power up to

50 Hz
53 m ³ /h
50 m
11 kW



e-NSCE SERIES
Closed impeller
pumps, extended
shaft
According to EN 733

Capacities up to
Head up to
Powers up to
Temp

50 Hz	60 Hz
130 m ³ /h	181 m ³ /h
100 m	100 m
22 kW	22 kW
-25°C to +140°C	



Various materials and seals options available



FORCDYNO

XYLEM WATER PUMPS

End Suction Single stage centrifugal Pumps

e-NSCS SERIES
Closed impeller
pumps, stub shaft
According to EN 733



Capacities up to
Head up to
Powers up to
Temp

50 Hz	60 Hz
1300 m ³ /h	967 m ³ /h
160 m	141 m
90 kW	90 kW
-25°C to +140°C	-25°C to +140°C

Various materials and seals options available

e-NSCF/C SERIES
Closed impeller
pumps, frame
mounted (elastic
or spacer
coupling)
According to EN 733



Capacities up to
Head up to
Powers up to
Temp

50 Hz	60 Hz
1800 m ³ /h	2200 m ³ /h
160 m	155 m
315 kW	400 kW
-25°C to +140°C	-25°C to +140°C

Various materials and seals options available

e-SHE-SHS-SHF SERIES
Full stainless steel
(AISI 316) pumps:
extend shaft, stub
shaft and frame
mounted



Capacity up to
Head up to
Power up to
Temp

50 Hz	60 Hz
240 m ³ /h	240 m ³ /h
110 m	115 m
75 kW (extended shaft version up to 22 kW)	75 kW
-30°C to +120°C	-30°C to +120°C

Various materials and seals options available

LSB SERIES
Single stage end
suction pump in
close coupled
(block) design



Capacity up to
Head up to
Temperature
Size

50 Hz
450 m ³ /h
150 m
140°C
DN 25-150

Various materials and seals options available

LSN SERIES
Closed impeller
pumps
frame mounted (elastic
or spacer coupling)
According to ISO 5199



Capacity up to
Head up to
Temperature

50 Hz
450 m ³ /h
150 m
140 °C standard (180°C extended temp available)
DN 25-150

Size

Various materials and seals options available

LS SERIES
Closed impeller 16
bar pumps frame
mounted
According to ISO 5199



Capacity up to
Head up to
Temperature
Size

50 Hz
4600 m ³ /h
100 m
180°C
DN 150-600

Various materials and seals options available

LC/LCP SERIES
Closed impeller 25
bar pumps frame
mounted
According to ISO 5199



Capacity up to
Head up to
Temperature
Size

50 Hz
4600 m ³ /h
100 m
180°C
DN 150-600

Various materials and seals options available



FORCDYNO

XYLEM WATER PUMPS

In-line Dry Rotor Centrifugal Pumps



In-line centrifugal pumps with cast iron pump available in the single and twin configurations. Suitable for handling hot or cold moderately aggressive liquids. With wide options both in terms of impeller material and mechanical seals, the e-LNE/LNT is the right solution for 1000's of liquids.

Variable speed pumping is available with the addition of the Hydrovar (see page 19).



e-LNEE SERIES
Extended shaft

Capacities up to
Head up to
Powers up to
Temp

50 Hz	60 Hz
300 m ³ /h	250 m ³ /h
100 m	98 m
22 kW	22kW
-25°C to +140°C	-25°C to +140°C



e-LNES SERIES
Stub shaft in-line
pumps

Capacity up to
Head up to
Power up to
Temp

50 Hz	60 Hz
400 m ³ /h	1000 m ³ /h
100 m	137,5 m
37 kW	90 kW
-25°C to +140°C	-25°C to +140°C



e-LNTE- LNTS
SERIES
Extended shaft and
stub shaft in-line
twin

Capacities up to
Head up to
Powers up to
Temp

50 Hz	60 Hz
800 m ³ /h	439 m ³ /h
100 m	110 m
37 kW	45 kW
-25°C to +140°C	-25°C to +140°C



FORCDYNO

XYLEM WATER PUMPS

Multi-stage Pumps



e-SV™ SERIES vertical multistage pumps

The range of pumps features 11 models and can be specially configured for a wide range of applications.

Capacity up to
Head up to
Power up to
Temp

50 Hz
160 m³/h
330 m
55 kW
-30°C to +120°C (high temp
versions up to 180°C)

Capacity up to
Head up to
Power up to
Temp

60 Hz
160 m³/h
280 m
55 kW
-30°C to +120°C (high temp
versions up to 180°C)



SVI SERIES immersible vertical multistage pumps

Capacity up to
Head up to
Power up to
Temp

50 Hz	60 Hz
160 m³/h	160 m³/h
330 m	280 m
55 kW	55 kW
-10°C to +90°C	

12



Lowara has an extensive range of multi-stage products that start with the Lowara SV standard product through to the TDB range which are available in various materials including stainless steel, bronze and various iron options. Unique products within this range include the High Pressure e-SV system and a multi-outlet pump used in fire set applications.

Variable speed pumping is available with the addition of the Hydrovar (see page 19).



e-HM™ SERIES horizontal multistage pumps

Capacity up to
Head up to
Power up to

50 Hz / 60 Hz
29 m³/h
160 m
5,5 kW

VM SERIES High efficiency close- coupled vertical multistage pumps equipped with non-standard Lowara motors



Capacity up to
Head up to
Power up to
Max temp to

50 Hz	60 Hz
14 m³/h	17 m³/h
98 m	106 m
3 kW	4 kW
up to +90°C	



FORCDYNO

XYLEM WATER PUMPS

Multi-stage Pumps

e-MP NEW
Horizontal and
vertical multistage
pumps



NEW
VERSION
ALONG
2017

Capacity up to
Head up to
Temp
Size

50 Hz	60 Hz
850 m ³ /h	600 m ³ /h
950 m	900 m
140°C (optional up to 180°C)	
DN 40-125	

MPV/TDV
Vertical multistage
pumps



Capacity up to
Head up to
Temp
Size

50 Hz	60 Hz
340 m ³ /h	360 m ³ /h
500 m	500 m
140°C	
DN 100-125	

MP
Horizontal
multistage pump
with closed, radial
type impellers and
roller bearings on
both ends



Capacity up to
Head up to
Temp
Size

50 Hz	60 Hz
340 m ³ /h	360 m ³ /h
500 m	500 m
140°C	
DN 40-125	

MPE
Horizontal multistage
pump with bearings
on both ends.
Thrust balancing
and seal pressure
reduction by
balancing drum.



Capacity up to
Head up to
Temp
Size

50 Hz	60 Hz
300 m ³ /h	320 m ³ /h
850 m	850 m
140°C (optional up to 180°C)	
DN 100-125	

MPA
Thrust bearing
at drive side and
medium lubricated
slide bearing on
suction side



Inducer optional

Capacity up to
Head up to
Temp
Size

50 Hz	60 Hz
340 m ³ /h	360 m ³ /h
500 m	500 m
140°C	
DN 40-125	

P / MP 300
Horizontal
multistage pump
with bearings on
both ends



Capacity up to
Head up to
Temp
Size

50 Hz	60 Hz
1800 m ³ /h	1200 m ³ /h
300 m	300 m
140°C	
DN 80-300	

MPB/TDB
Vertical multistage
pump with closed,
radial type impellers in
close coupled (block)
design



Capacity up to
Head up to
Temp
Size

50 Hz	60 Hz
200 m ³ /h	240 m ³ /h
500 m	500 m
140°C	
DN 40-125	

PVa
Vertical multistage
pump with closed,
radial type impellers



Capacity up to
Head up to
Temp
Size

50 Hz	60 Hz
850 m ³ /h	1000 m ³ /h
300 m	300 m
140°C	
DN 80-200	



FORCDYNO

XYLEM WATER PUMPS

Drainage and wastewater products

The Lowara submersible pumps range is suited for a wide variety of applications such as, for example, drainage of residential sump pits, sewage pumping, emptying of sumps, septic tanks and wastewater discharge tanks.

DOC SERIES cellar drainage pumps

Capacity up to
Head up to
Power up to
Solids up to

50 Hz	60 Hz
14 m ³ /h	13,2 m ³ /h
11 m	11 m
0,55 kW	0,55 kW
20 mm	



DL SERIES wastewater/ sewage pumps

Capacity up to
Head up to
Power up to
Solids up to

50 Hz	60 Hz
42 m ³ /h	42 m ³ /h
21,9 m	22 m
1,5 kW	1,5 kW
50 mm	



DOMO SERIES wastewater/ sewage pumps

Capacity up to
Head up to
Power up to
Solids up to

50 Hz	60 Hz
40 m ³ /h	40 m ³ /h
14,5 m	14,5 m
1,5 kW	1,5 kW
50 mm	



DOMO GRI SERIES sewage pumps with grinder device

Capacity up to
Head up to
Power up to

50 Hz	60 Hz
6,6 m ³ /h	6,6 m ³ /h
25 m	29 m
1,1 kW	1,1 kW



DIWA SERIES drainage pumps

Capacity up to
Head up to
Power up to
Solids up to

50 Hz	60 Hz
25 m ³ /h	25 m ³ /h
21 m	20 m
1,5 kW	1,5 kW
8 mm	



DN SERIES drainage pumps

Capacity up to
Head up to
Power up to
Solids up to

50 Hz	60 Hz
16,8 m ³ /h	18 m ³ /h
22 m	21 m
0,75 kW	0,8 kW
5 mm	





FORCDYNO

XYLEM WATER PUMPS

Drainage and wastewater products

Lowara
1300 SERIES
Wastewater /
sewage pumps
in cast iron with
non-clog or vortex
impeller



Capacity up to
Head up to
Power up to
Temp

50 Hz
414 m³/h
63 m
18 kW
up to +40°C

BOX SERIES
prefabricated
lifting stations

Minibox
Midibox
Singlebox Plus
Doublebox Plus
Maxibox Plus



Volume
Pumps

up to 1900 liters
1 or 2



SOS FLOODKIT
For flooded
basements and
garages

Pump type DOC 3 with
10 metres cable

Can be used in or
outside the box.



FORCDYNO

XYLEM WATER PUMPS

Submersible borehole pumps

The Lowara borehole range offers products ranging in pump diameters from 4" to 12". Various material options are available including cast iron and various grades of stainless steel. In addition to the products shown, Lowara can offer alternative mounting options of this range including cooling shrouds and pressure shrouds.

e-GS SERIES 4" borehole pumps

Capacity up to
Head up to
Power up to

50 Hz	60 Hz
21 m ³ /h	22 m ³ /h
340 m	300 m
7,5 kW	7,5 kW



SCUBA SERIES 5" submersible pumps

Capacity up to
Head up to
Power up to

50 Hz	60 Hz
7,5 m ³ /h	7,5 m ³ /h
80 m	75 m
1,1 kW	1,1 kW



Z6 SERIES 6" borehole pumps

Capacity up to
Head up to
Power up to

50 Hz	60 Hz
78 m ³ /h	90 m ³ /h
700 m	700 m
55 kW	55 kW



Z8-Z10-Z12 SERIES 8"-10"-12" borehole pumps

Capacity up to
Head up to
Power up to

50 Hz	60 Hz
520 m ³ /h	480 m ³ /h
500 m	500 m
350 kW	350 kW



L6W-L8W-L10W- L12W SERIES Rewindable motors

Powers up to

50 Hz	60 Hz
300 kW	300 kW



Water and oil filled 4" submersible motors series

Powers up to

50 Hz	60 Hz
7,5 kW	7,5 kW





FORCDYNO

XYLEM WATER PUMPS

Booster Sets

GXS SERIES SETS

Single-phase power supply, fixed speed and pressure switch control. For BG, CA, CEA, HM and SV series electric pumps.

Flow rate up to
Power up to



50 Hz / 60 Hz
58 m³/h
2 x 1.5 kW

GTKS SERIES SETS

Single-phase power supply, variable speed and control by pressure transducers and Teknospeed electronic speed controllers integrated with the motor. For BG, CA, CEA, HM and SV series electric pumps.

Flow up to
Power up to



50 Hz / 60 Hz
52 m³/h
2 x 1.1 kW

GMD SERIES SETS

Three-phase power supply, fixed speed and pressure switch control. For BG, CA, CEA, HM and SV series electric pumps.

Flow up to
Power up to



50 Hz / 60 Hz
62 m³/h
2 x 4 kW

GHV SERIES SETS

Single-phase or three-phase power supply, variable speed and control by pressure transducers and HYDROVAR™ electronic speed controllers mounted on the motor. For SV series electric pumps.

Flow up to
Head up to
Power up to



50 Hz / 60 Hz
640 m³/h
160 m
22 kW



Wide range of 2, 3 or 4 pump units controlled by pressure switches or pressure transmitter, with constant or variable speed. The Lowara range of automatic booster units is designed to supply water to intermittent and variable demand users, employing centrifugal electric pumps controlled by an electric panel.

Available at 60 Hz on request.

GV SERIES SETS

Variable speed booster sets up to four pumps eSV series.

Flow up to
Head up to
Power up to



50 Hz / 60 Hz
640 m³/h
160 m
37 kW

GS SERIES SETS

Fixed speed booster sets, two and three pumps eSV and e-NSC series.

Flow up to
Head up to
Power up to



50 Hz / 60 Hz
480 m³/h
160 m
37 kW

FIRE FIGHTING SYSTEMS EN 12845 GEM SERIES

Fire pump package manufactured in accordance to EN 12845. Max. power size for service pump 200 kW. Manifold in painted steel pipe with anchor bolts to fix to a wall or floor.

Flow up to
Head up to



50 Hz / 60 Hz
766 m³/h
146 m



FORCDYNO

SPX Johnson Pumps



manohar@forcdyno.com

+91-955 540 1089

SPX JOHNSON PUMPS

Centrifugal Pumps

Centrifugal Pumps are the most common and well-established pumps on the market. They come in many different models and can transfer fluids with high efficiency over a wide range of flows and pressures. Johnson Pump brand offers several series of centrifugal pumps, many of which comply with ISO, DIN and API standards.

Johnson Pump brand's Combi system is a modular programme of centrifugal pumps with a high degree of interchangeability of parts between the different pump constructions.

The modular design makes it possible to construct many design variants and it also provides a large degree of interchangeability of components between various pump types and even between the different pump families. This, together with the wide range of materials available, makes it easy to supply the correct design for each specific application; allowing customers to be served in an optimal way.

SPX FLOW supplies you with a full range of documentation for our pumps:

- ATEX
- 3A
- EHEDG
- FDA, USP VI
- Material traceability & certification 2.1, 2.2 and 3.1
- QHP tests
- Vibration tests
- Noise level tests

JP_000_USA Version: 04/2016 Issued: 03/2016

Standardized pumps



COMBINORM
utility or general purpose pump according to EN733
Max. capacity 1500 m³/h (6600 GPM)
Max. head 100 m (328 ft)
Max. pressure 10 bar (145 psi)
Max. temp 200 °C (392 °F)
Max. speed 3600 rpm
Materials: cast iron, nodular cast iron, bronze



COMBI-CHEM
heavy duty chemical pump according to ISO 5199 and EN 22858
Max. capacity 800 m³/h (3520 GPM)
Max. head 160 m (525 ft)
Max. pressure 16 bar (232 psi)
Max. temp 200 °C (392 °F)
Max. speed 3600 rpm
Materials: cast iron, nodular cast iron, bronze, stainless steel

Self-priming pumps



COMBI-PRIME H & V
horizontal & vertical (variable position suction bend), hydraulics according to EN733
Max. capacity 500 m³/h (2200 GPM) [H]
800 m³/h (3520 GPM) [V]
Max. head 100 m (328 ft)
Max. pressure 10 bar (145 psi)
Max. temp 80 °C (176 °F)
Max. speed 3600 rpm
Materials: cast iron, bronze



FRE-FLOW
horizontal, handles gas and particle content
Max. capacity 350 m³/h (1540 GPM)
Max. head 80 m (262 ft)
Max. pressure 9 bar (131 psi)
Max. temp 95 °C (203 °F)
Max. speed 3600 rpm
Materials: cast iron, bronze, stainless steel

Magnetic Drive pumps



COMBI-MAG
heavy duty seal-less pump according to ISO 5199 and EN 22858
Max. capacity 550 m³/h (2420 GPM)
Max. head 160 m (525 ft)
Max. pressure 16 bar (232 psi)
Max. temp 300 °C (572 °F)
Max. speed 3600 rpm
Materials: cast iron, nodular cast iron, stainless steel, duplex, Alloy 20, Hastelloy C



COMBI-MAG-BLOC
heavy duty seal-less close-coupled pump according to ISO 5199 and EN 22858
Max. capacity 280 m³/h (1230 GPM)
Max. head 140 m (459 ft)
Max. pressure 16 bar (232 psi)
Max. temp 200 °C (392 °F)
Max. speed 3600 rpm
Materials: cast iron, nodular cast iron, stainless steel, duplex, Alloy 20, Hastelloy C

Thermal oil / hot water pumps



COMBI-THERM
specially developed for thermal oil (DIN 4754) and hot water applications (ratings and dimensions to EN 733)
Max. capacity 400 m³/h (1761 GPM)
Max. head 160 m (525 ft)
Max. pressure 16 bar (232 psi)
Max. temp Thermal oil 350 °C (662 °F)
Hot water 190 °C (374 °F)
Max. speed 3600 rpm
Materials: nodular cast iron



FORCDYNO

SPX JOHNSON PUMPS



COMBIPro

heavy duty process pump according to API610, API682 and API685

Max. capacity 350 m³/h (1540 GPM)
Max. head 160 m (525 ft)
Max. pressure 35 bar (508 psi)
Max. temp 350 °C (662 °F)
Max. speed 3600 rpm
Materials: carbon steel, 13% Cr-steel, stainless steel (316)



Monobloc pumps



COMBIBloc

compact close-coupled pump

Max. capacity 850 m³/h (3740 GPM)
Max. head 105 m (344 ft)
Max. pressure 10 bar (145 psi)
Max. temp 120 °C (248 °F)
Max. speed 3600 rpm
Materials: cast iron, bronze, stainless steel



Vortex-type pumps



COMBI DIRT

horizontal or vertical pump utilizing vortex principle, handles particles and gaseous content
Max. capacity 420 m³/h (1850 GPM)
Max. head 40 m (130 ft)
Max. pressure 10 bar (145 psi)
Max. temp 80 °C (176 °F)
Max. speed 1800 rpm
Max. free passage 100 mm (3.94")
Materials: cast iron, nodular cast iron, stainless steel, super duplex



KGE

horizontal, handles gas and particle content

Max. capacity 100 m³/h (440 GPM)
Max. head 60 m (197 ft)
Max. pressure 8 bar (116 psi)
Max. temp 95 °C (203 °F)
Max. speed 3600 rpm
Materials: cast iron

Multistage pumps



MCH & MCV

horizontal & vertical

Max. capacity 100 m³/h (440 GPM)
Max. head 340 m (1120 ft)
Max. pressure 40 bar (580 psi)
Max. temp 150 °C (302 °F) [MCH]
120 °C (248 °F) [MCV]
Max. speed 3600 rpm
Materials: cast iron, bronze



MCHZ

horizontal, self-priming

Max. capacity 100 m³/h (440 GPM)
Max. head 340 m (1120 ft)
Max. pressure 40 bar (580 psi)
Max. temp 120 °C (248 °F)
Max. speed 3600 rpm
Materials: cast iron



MDR

Close-coupled seal-less pump

Max. capacity 30 m³/h (130 GPM)
Max. head 24 m (78 ft)
Max. pressure 3 bar (43 psi)
Max. temp 100 °C (212 °F)
Max. speed 2800 rpm
Materials: PP, PVDF

InLine pumps



COMBI Line

close-coupled circulation pump on extended shaft motor

Max. capacity 500 m³/h (2200 GPM)
Max. head 35 m (115 ft)
Max. pressure 10 bar (145 psi)
Max. temp 140 °C (284 °F)
Max. speed 1800 rpm
Materials: cast iron



COMBI Line Bloc

close-coupled circulation pump on stub shaft to IEC motor

Max. capacity 450 m³/h (1980 GPM)
Max. head 100 m (328 ft)
Max. pressure 10 bar (145 psi)
Max. temp 120 °C (248 °F)
Max. speed 3600 rpm
Materials: cast iron, bronze



Vertical pumps



COMBI FLEX, -UNIVERSAL, -BLOC

variable position suction bend, hydraulics according to EN733

Max. capacity 1500 m³/h (6600 GPM)
Max. head 140 m (459 ft)
Max. pressure 10 bar (145 psi)
Max. temp 200 °C (392 °F)
Max. speed 3600 rpm
Materials: cast iron, bronze



Submersible pumps



COMBI Sump

vertical pump with dry motor EN 733, EN 22858 and API 610

Max. capacity 1500 m³/h (6600 GPM)
Max. head 160 m (525 ft)
Max. pressure 16 bar (232 psi)
[35 bar (508 psi) API 610]
Max. temp 160 °C (320 °F)
Max. speed 3600 rpm
Materials: cast iron, nodular cast iron, bronze, stainless steel, carbon steel, 13% Cr-steel



COMBI Well

vertical pump with dry motor for paint/solvent degreasing spray units

Max. capacity 300 m³/h (1320 GPM)
Max. head 45 m (148 ft)
Max. pressure 10 bar (145 psi)
Max. temp 80 °C (176 °F)
Max. speed 3000 rpm
Materials: cast iron, stainless steel



SPX JOHNSON PUMPS

Rotary Lobe pumps



TopLOBEPLUS
hygienic tri-lobe rotors

Max. capacity 124 m³/h (547 GPM)
Max. pressure 10 bar (145 psi)
Max. temp 100°C (212°F)
Max. viscosity 100 000 mPas / cP
Materials: stainless steel (316L)



TopLOBE
hygienic tri-lobe rotors

Max. capacity 125 m³/h (550 GPM)
Max. pressure 22 bar (319 psi)
Max. temp 70°C (158°F)
Max. viscosity 100 000 mPas / cP
Materials: stainless steel (316L), duplex



TopWING
high hygienic bi-wing & multilobe rotors

Max. capacity 156 m³/h (687 GPM)
Max. pressure 15 bar (218 psi)
Max. temp 150°C (300°F)
Max. viscosity 80 000 mPas / cP
Materials: stainless steel (316L), duplex



FIP & FB
self-priming pumps, industry / hygienic stainless steel and bronze versions

Max. capacity 37.5 m³/h (165 GPM)
Max. pressure 4 bar (58 psi)
Max. temp 55°C (130°F)
Materials: bronze, stainless steel, polished stainless steel



TopAIR
self-priming multipurpose pump with peripheral flow

Max. capacity 48 m³/h (211 GPM)
Max. pressure 7 bar (102 psi)
Max. temp 120°C (248°F)
Max. viscosity 10 000 mPas / cP
Materials: PP, aluminium, cast iron, stainless steel, PTFE, PVDF, PVC



OptiFlo
self-priming multipurpose pump with central flow

Max. capacity 8 m³/h (36 GPM)
Max. pressure 7 bar (102 psi)
Max. temp 85°C (185°F)
Max. viscosity 6 000 mPas / cP
Materials: PP, aluminium, stainless steel



TopGEAR TG G
for general purpose heavy duty

Max. capacity 250 m³/h (1100 GPM)
Max. pressure 16 bar (230 psi)
Max. temp 300°C (570°F)
Max. viscosity 80 000 mPas / cP
Materials: cast iron



TopGEAR TG H
for high demanding heavy duty

Max. capacity 130 m³/h (570 GPM)
Max. pressure 16 bar (230 psi)
Max. temp 300°C (570°F)
Max. viscosity 80 000 mPas / cP
Materials: stainless steel, cast steel, ductile iron



TopGEAR MAG
seal-less, with magnetic drive

Max. capacity 80 m³/h (350 GPM)
Max. pressure 16 bar (230 psi)
Max. temp 250°C (480°F)
Max. viscosity 10 000 mPas / cP
Materials: cast iron, stainless steel

TopFilter – Filters and strainers



TopFILTER TFOV

Single filter
Pipe sizes 20 – 150 mm (¾" – 6")
Max. pressure 50 bar (725 psi)
Connections
Threaded: BSP, NPT
Flange: BS10, BS4504, ANSI, DIN
Max. temp 200°C (392°F)
Materials: cast iron, cast steel, gunmetal, stainless steel



TopFILTER TFOVM

Single, multibasket filter
Pipe sizes 200 – 250 mm (8" – 10")
Max. pressure 13.8 bar (200 psi)
Connections
Threaded: BSP, NPT
Flange: BS10, BS4504, ANSI, DIN
Max. temp 200°C (392°F)
Materials: cast iron, cast steel, gunmetal, stainless steel



TopFILTER TFOV

Dual filter
Pipe sizes 20 – 200 mm (¾" – 8")
Max. pressure 50 bar (725 psi)
Connections
Threaded: BSP, NPT
Flange: BS10, BS4504, ANSI, DIN
Max. temp 200°C (392°F)
Materials: cast iron, cast steel, gunmetal, stainless steel

JP_000_USA Version: 04/2016 Issued: 03/2016



FORCDYNO

Bran + Luebbe

PRODUCTS (Bran + Luebbe)

ProCam Metering Pumps

The ProCam modular building block system allows single and multi stream pumps to provide an economical and reliable solution for a wide range of metering applications.

ProCAM SMART

Standard, economic single stream pump to handle even hazardous liquids with no special requirements.

Flow range: 5 to 500 l/h
Operating Pressure: up to 20 bar*



ProCAM DIAPHRAGM/PLUNGER PUMP

Engineered, single or multi stream pump designed to meet specific application requirements.

Diaphragm pump:*

Flow range: up to 3,000 l/h
Operating Pressure: up to 20 bar*

Plunger Pump:*

Flow range: 0.16 to 60.5 l/h
Operating Pressure: up to 80 bar*



ProCAM HYGIENIC

For stringent hygienic and sterile applications, this pump is suitable for CIP and is certified to EHEDG (European Hygienic Engineering and Design Group) and 3A Sanitary Standards.

Flow range: 5 to 500 l/h
Operating Pressure: up to 20 bar*



ProCAM COMPACT METERING STATION

Compact design - ProCam metering pump and metering station allows easy preparation of products to be metered.

Flow range: 5 to 500 l/h
Operating Pressure: up to 20 bar*
Tank size: 60 to 500 l



PRODUCTS (Bran + Luebbe)

NOVADOS Metering Pumps

The NOVADOS offers an unparalleled range of metering pumps for an extensive number of liquid metering or blending applications.



NOVADOS DIAPHRAGM PUMPS

Robust pump with outstanding performance parameters to suit applications using hermetically sealed pump heads to handle hazardous liquids.

Flow range: 400 ml/h to 10,000 l/h
Operating Pressure: up to 1,000 bar*



NOVADOS PLUNGER PUMPS

Using the same drive design as for diaphragm pumps, the plunger pump head option can be considered for less demanding applications.

Flow range: 400 ml/h to 10,000 l/h
Operating Pressure: up to 500 bar*



NOVADOS PUMPS WITH DOUBLE-ACTING DIAPHRAGM PUMP HEAD

Twice the flow of a traditional diaphragm pump head it removes the need for a duplex design, reducing footprint and weight. Equipped with a suction pressure module as special option it is suitable for low energy recirculation processes.



MODULAR BUILDING BLOCK - HORIZONTAL AND VERTICAL CONFIGURATION

Combination of diaphragm or plunger pumps for multi-stream applications with gears and pump heads matching the specifications of the customer.



PRODUCTS (Bran + Luebbe)

NOVAPLEX Process Diaphragm Pumps

The Bran+Luebbe NOVAPLEX is a flexible high performance process diaphragm pump handling toxic or aggressive liquids and suspensions at high flow rates and pressure. Typical applications can be found in the chemical, petrochemical as well as oil & gas industries.

NOVAPLEX VECTOR

A revolutionary design in the market for diaphragm process pumps! This design has a unique layout that offers a more compact pump.

Flow range: upon request
Operating Pressure: up to 400 bar*



NOVAPLEX INTEGRAL

NOVAPLEX Integral diaphragm process pumps are powerful and exact feed pumps in processes where high capacities and/or high operating pressures are required. Equipped with an integrated reduction gear the pumps are very compact with a small foot print.

Flow range: up to approx. 60 m³/h
Operating Pressure: up to 1,000 bar*



NOVAPLEX CLASSIC

Designed with an external reduction gear this pump allows the incorporation of customer specified gearboxes.

Flow range: up to approx. 80 m³/h
Operating Pressure: up to 1,000 bar*



MEGANIZER

High pressure homogenizer based on the NOVAPLEX hermetically sealed process diaphragm pumps with single or double-stage homogenizing head.

Flow range: depending on pressure rating
 up to approx. 30m³/h
Operating Pressure: 150 to 1,000 bar*



* for specific types and designs



FORCDYNO

PRODUCTS (Bran + Luebbe)

AutoBlend Process Systems

Process units designed for high quality products blended from liquids, pastes and dissolved powders.

OUR CORE COMPETENCE:

- Dilution of chemicals
- Production of personal care products and household detergents
- Systems in paper production
- Continuous dilution of ether sulphate paste
- Systems in water treatment plants
- Production plants for industrial cleaners and cooling agents
- Oil & Gas

TYPICAL SYSTEMS*:



CHEMICAL INDUSTRY

Preparation and metering of cold-coating agent for glass containers. Specifically pharmaceutical phials need internal coating to meet the quality requirements of scratch-free internal surface.



PERSONAL CARE AND HOUSEHOLD DETERGENTS

The production of shampoos, shower gels, heavy and standard liquid detergents, fabric softener, and household detergents require an exact metering and suitable mixing process in order to meet the stringent specifications. Using high quality SPX components the customer can rely on constant quality, low operating cost, reduced maintenance and high availability of the system.



WATER TREATMENT

Treating boiler feed water is a major task in power plants (conventional and nuclear) and district heating. We supply customer specified plants for various applications.



OIL & GAS INDUSTRY

Within the Oil and Gas Industry, the requirements for Chemical Injection Packages are very diverse depending on the application, location, number of chemicals, multi-point injection, increases in production output and changes in production conditions. We supply basic single chemical / single injection point skids to multi-ingredient chemical storage and pumping packages.

* more applications on request

PRODUCTS (Bran + Luebbe)

Mixers

Static or dynamic in-line mixers are available for a variety of operations covering a wide range of applications.

PENTAX - DYNAMIC MIXER

The dynamic in-line PENTAX mixer is designed to meet the demands of industrial markets. An hygienic option is also available. Both designs incorporate the following characteristics :

- High reliability and trouble-free operation due to the robust design
- Stator and rotor mixing system ensures a constant and stable mixing result
- Various options of materials for mechanical seals, gaskets, and drives are available to meet specific process requirements

Throughput: up to 50,000l/h*
Operating Pressure: up to 10 bar

* special designs on request



N-FORM - STATIC MIXER

Simple and robust with no moving parts for trouble-free operation.

- Materials: SS 1.4571 / 1.4581*
- Diameters: DN 15 to DN 65
- Connection: as required
- Heating/cooling: jacketing possible
- The mixing elements can be removed for cleaning and inspection.

* special designs on request.



Analyzers

With a wide range of process analyzers and an experienced team, Bran+Luebbe is an internationally recognised brand. The latest technology, reliable service and support are offered for the water and waste water treatment industries.



POWERMON

The PowerMon is the latest development in the Bran+Luebbe fully automatic on-line process analyzer family. The measuring range reaches from normal concentrations down to traces by using wet-chemical reactions. Fully automatic operation, self-monitoring, and automatic recalibration make them an ideal on-line process analyzer.

PowerMon Titrometer

BO_3^{3-} , hardness, H_2O_2 , peracetic acid, acidity (p/m-value), S^{2-}

PowerMon Kolorimeter

Al^{3+} , Cl_2 , ClO_2 , Cr^{6+} , Co, CN⁻, Cu^{2+} , Fe^{2+/3+}, Hazen, Mn^{2+} , N_2H_4 , NH_4^+ , Ni^{2+} , NO_3^- , NO_2^- , Phenol, PO_4^{3-} , TP, S^{2-}

PowerMon Silikometer

SiO_2

PowerMon Natriometer

Na^+

PowerMon Ionometer

CO_3 , Cl⁻, K⁺, NH_4^+ , F⁻, NO_3^-



POWERMON S

The PowerMon S is a compact closed multi-component analyzing system. Based on spectrometry it is an easy-to-handle economic system.

- Multi-component on-line analyzer
- Measured components: total nitrogen, total phosphate, DOC, CSB
- Measurement of NH_4^+-N / NO_3^--N / $\text{PO}_4^{3-}-\text{P}$
- Used in waste-water treatment plants, rivers, lakes, and coastal areas



FORCDYNO

SR Metering Pumps



manohar@forcdyno.com

+91-955 540 1089



FORCDYNO

PRODUCTS

SR Metering pumps



SL SERIES



HD SERIES



SMD SERIES



SDP SERIES



FORCDYNO



Moniba Pumps



manohar@forcdyno.com

+91-955 540 1089



FORCDYNO

PRODUCTS

Moniba Pumps



**CANNED MOTOR
PUMPS**



**SEALLESS
MAGNETIC DRIVE
PUMPS**



**INDUSTRIAL HOSE
PUMP**



AODD PUMP



PP PUMP



**PVDF/ PFA LINED
CENTRIFUGE
PUMPS**



FORCDYNO

G M Engineering Valves



manohar@forcdyno.com

+91-955 540 1089



FORCDYNO

PRODUCTS

G M Engineering Valves



BALL VALVE



BUTTERFLY VALVE



CHECK VALVE



**FORGED STEEL
VALVE**



GATE VALVE



GLOBE VALVE



LINED VALVE



PLUG VALVE



PISTON VALVE



**BELLOW SEAL
VALVE**



FORCDYNO



WILFLEY Pumps (Legacy, Slurry & Chemical Pumps)



manohar@forcdyno.com

+91-955 540 1089



FORCDYNO

PRODUCTS

Legacy Pumps



K



AG



AF



FORCDYNO

PRODUCTS

Slurry Pumps



EMW



KPRO



HD



FORCDYNO

PRODUCTS

Chemical Pumps



A9



A7



S3 ACID



FORCDYNO

CONTACT DETAILS

Call Anytime

+91-9555401089

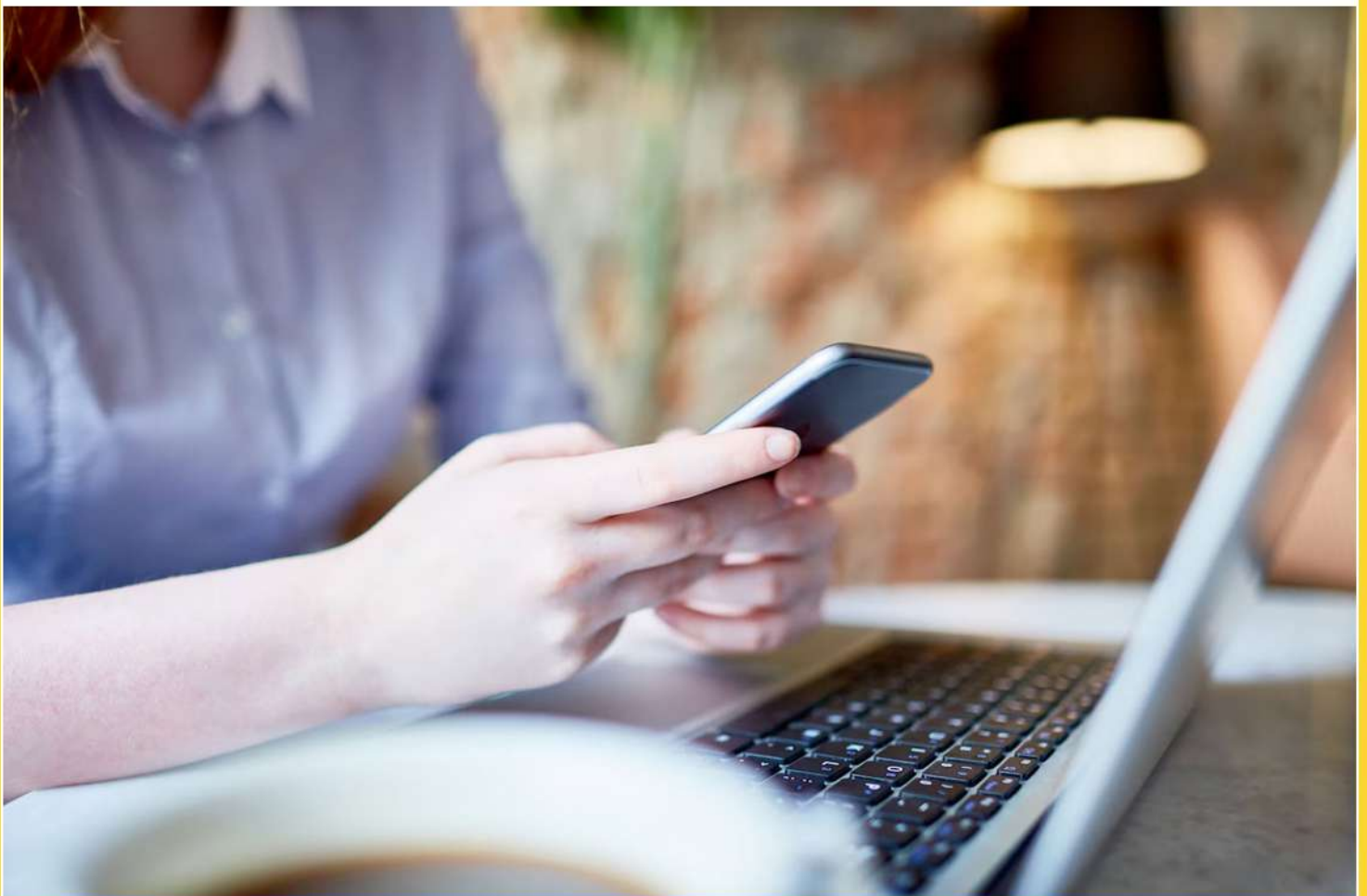
Write email

manohar@forcdyno.com

info@forcdyno.com

Visit Office

Gaur city1, galaxy plaza, Noida
extension, pin - 201309



manohar@forcdyno.com

+91-955 540 1089



FORCDYNO

THANKS

Thank you